

# CAVITY DWELLING BEES – Central Tablelands



Bob Luttrell



Laurence Sanders



©Erica Siegel

Some native bees nest in pre-existing cavities such as old borer holes, hollow stems and small cracks or crevices.



Bees Business

Excavated stems

Many seal their brood (eggs) cells with substances such as; leaves, plant resin, cellophane secretions, wax or wood pulp.

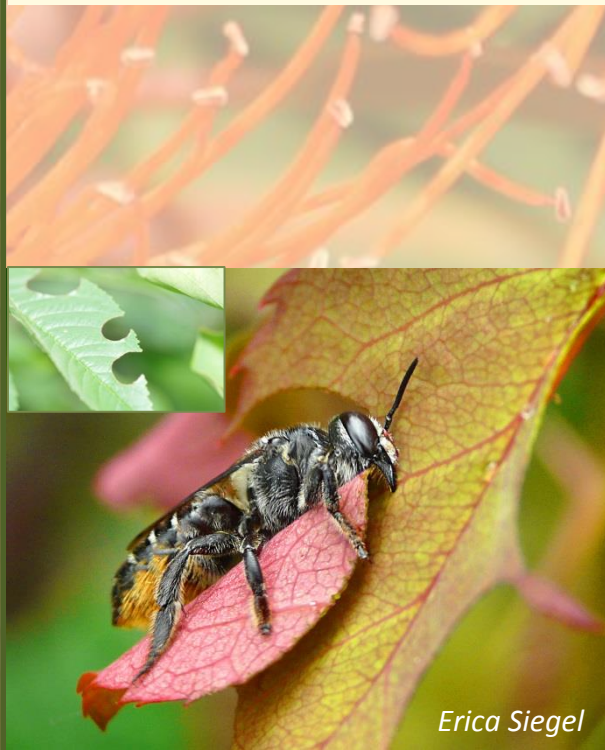


Marc Newman



Michael Duncan

Some will nest in man-made substrate.



Erica Siegel



Marc Newman



Bees Business



Local Land Services  
Central Tablelands

