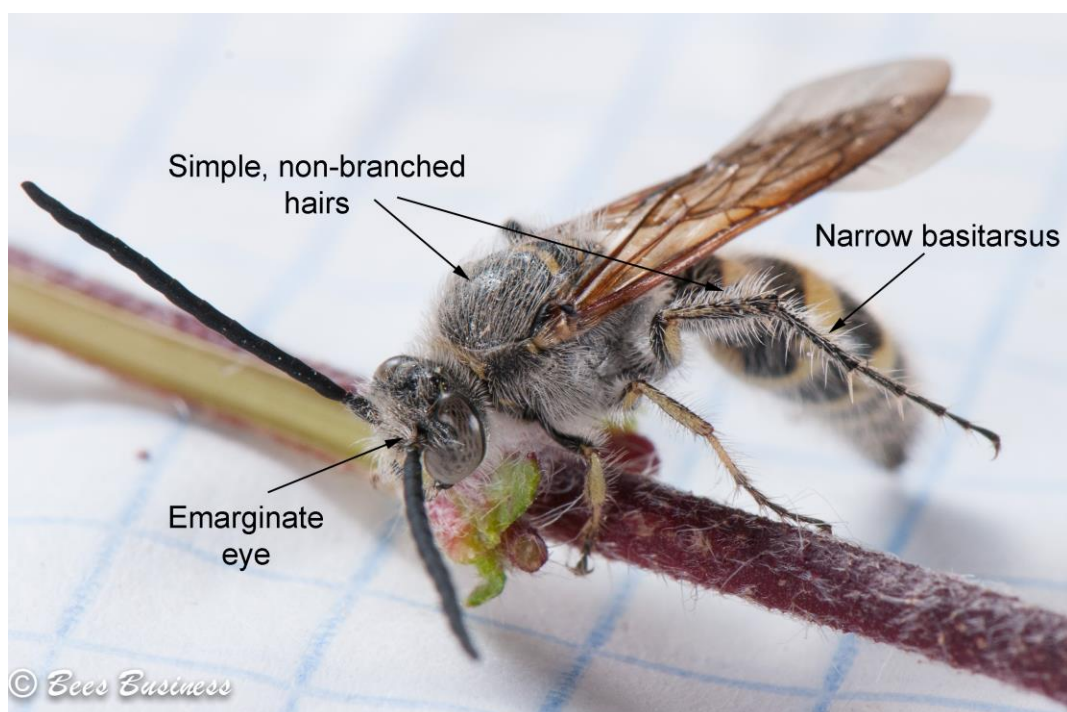


5 Differences Between Australian Native Bees and Wasps

Both wasps and bees have narrow waists and membrane-like wings.

Females of both groups have modified ovipositors which enable them to sting.

Both solitary wasps and solitary bees are not aggressive and are unlikely to sting you.



Bees feed their off-spring **pollen**. Wasps feed their off-spring **meat** such as caterpillars and grasshoppers.

Bees usually have thick, **branched hairs** which attract large amounts of pollen to their bodies. Wasps are usually hairless or have **simple, non-branched hairs**.

Bees have modified hair structures (scopa) to **carry pollen** loads back to the nest. Wasps don't carry pollen.

Bees have a broadened **basitarsus** (first segment of the 'foot') on the hind leg. Wasps have a narrow basitarsus.

Bees have uniform shaped, **compound eyes**. Some wasps can have uniform compound eyes but some (paper and flower wasps) have "emarginate" eyes, which wrap around the antennae.